



Dear parents and carers,

We would like to welcome you back to another half-term at St Mary's Primary school. We hope this half-term is filled with more fantastic learning, and all of our children's lights are continuing to develop.

Class teachers

Diamond

Miss Chin

Emerald

Miss Jeffers

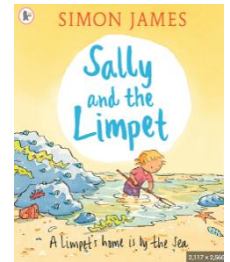
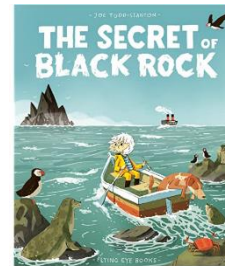
Ruby

Mrs Thompson and Mrs Edginton

Ruby class will be taught by Mrs Thompson and Mrs Edginton until the end of the year – The children are very familiar with both of these teachers and know them well.

Curriculum and Learning

Our curriculum question for the half term to ignite curiosity and learning continues to be "Why do we love to be beside the seaside?" We are continuing to develop this topic through the text: [The Secret of Black Rock](#). This will form the basis of learning in [English](#) for children, and Year 1 will spend some time continuing to look at the text: [Sally and The Limpet](#).



We will be further exploring this question in [Geography](#) by learning about locational knowledge of the seaside, and in [Art](#) we will learning how to compose and create our own landscape drawing.

Other curriculum focuses include:

[Maths](#) – **Year 1** – Calculating with numbers to 20 **Year 2** Multiplication and division

[Science](#) – Materials – shaping up

[Computing](#) – Programming continued

[RE](#) – Salvation: Why does Easter matter to Christians?

[Citizenship](#) – Medicines and me: Drugs, alcohol and tobacco.

[PE](#) – Team games and multi skills.

[Music](#) – Vocal and body sounds (By the sea)

Please ensure you read with your child each week, and in Year 2 practise their spellings. It's vital to children's progress that they receive support from both school and home in their learning journey.

Curriculum Enhancements

- Father Chris to spend some time in class discussing Easter.
- Geography – have a 'seaside' afternoon in class.

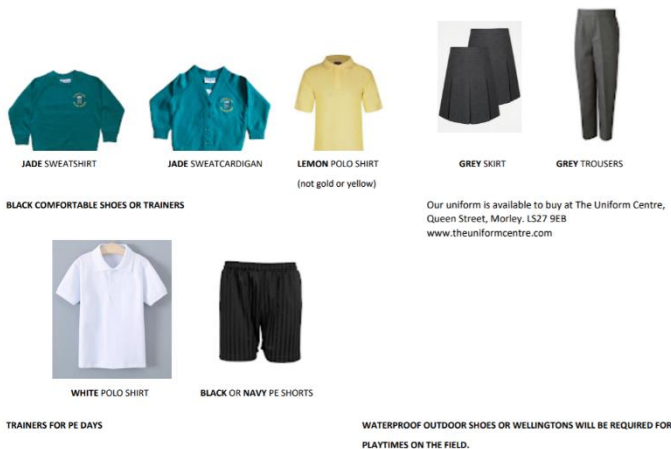
Key dates:

- Wednesday 1st and Thursday 2nd March – Pupil progress meetings with your child's teacher.
- Thursday 2nd March – World Book Day. More information to follow.
- W/c 27th March – Holy Week for Worship
- Thursday 30th (PM) Easter bonnet parade and egg decorating competition.
- Friday 31st March – Spring 2 attendance award.

Attendance and Punctuality

Just a reminder that children should arrive at 8:55am at their correct door. If you arrive after 9am you should go to the main school office to sign in. Please remember to let us know if someone different will be picking your child up.

Uniform: Your child must attend school in the correct uniform.



PE days for this half-term – Spring 2

PE days alter due to the whole school timetable for the hall.

Diamond and **Emerald** – Monday and Tuesday

Ruby – Monday and Wednesday

Please ensure your child is wearing the correct PE Kit, they should be wearing a plain white T-shirt with no logos or pictures on.

Playground safety before and after school:

A kind reminder that dogs need to wait outside the school gates and not brought onto the playground. Scooters and bikes should be pushed around the school grounds and not be ridden up and down the paths.

If you would like a paper copy of this newsletter, please ask your child's class teacher.

We are very much looking forward to a great half-term of learning, and having a happy, successful and fun time in Key Stage 1.

Kind Regards,

Key Stage 1 team

Contact details if you have anything you would like to discuss over email:

eleanor.chin@hunsletstmarys.co.uk – Diamond class teacher

ellie.jeffers@hunsletstmarys.co.uk – Emerald class teacher

jessica.crisp@hunsletstmarys.co.uk – Deputy head teacher

